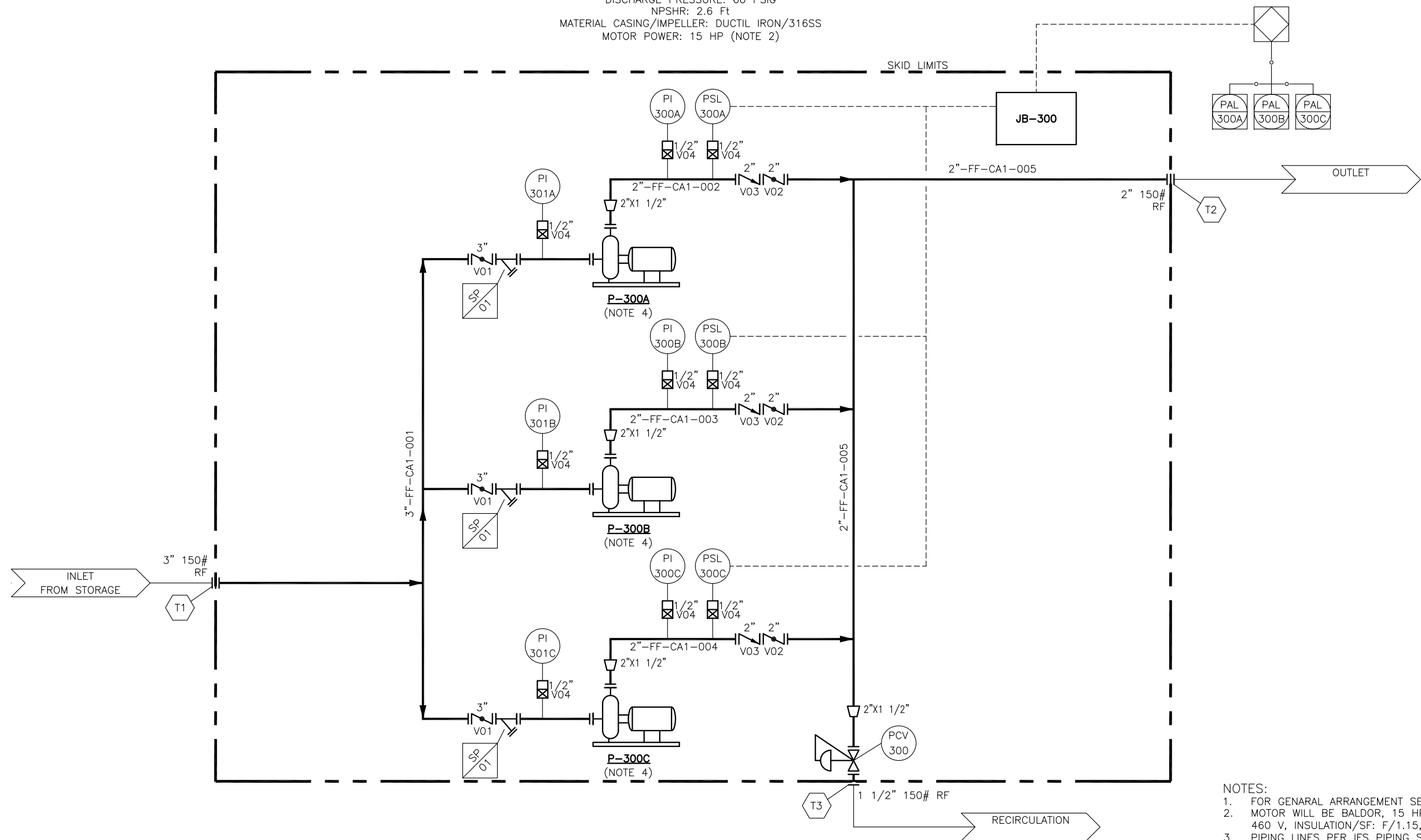


**P-300A/B/C**  
LIQUID FUEL FORWARDING PUMP  
RATED FLOW: 40 GPM  
3X50% (2 ACTIVE, 1 STANDBY)  
DISCHARGE PRESSURE: 60 PSIG  
NPSHR: 2.6 Ft  
MATERIAL CASING/IMPELLER: DUCTIL IRON/316SS  
MOTOR POWER: 15 HP (NOTE 2)



- NOTES:
1. FOR GENERAL ARRANGEMENT SEE DWG: G-24876-01 TRU 04
  2. MOTOR WILL BE BALDOR, 15 HP, 1800 RPM, 3 PH, 60 Hz, 460 V, INSULATION/SF: F/1.15, FRAME 254 T.
  3. PIPING LINES PER IFS PIPING SPECIFICATION CA1: CLASS 150 LBS, SMLS, A-106 GR. B PER ASME B31.1
  4. MOTOR WIRING & CONDUIT WILL BE BY OTHERS.



**INTEGRATED  
FLOW SOLUTIONS**

6461 REYNOLDS RD, TYLER, TEXAS, USA 75708  
PHONE NUMBER: +1 (903) 595-6511  
FAX NUMBER: +1 (903) 595-4861

THIS DRAWING IS THE PROPERTY OF INTEGRATED FLOW SOLUTIONS AND SHALL NOT BE REPRODUCED, COPIED, LENT, NOR USED FOR ANY PURPOSE OTHER THAN THAT WHICH IT IS FURNISHED EXCEPT BY WRITTEN PERMISSION.

A	04SEP09	ISSUED FOR CUSTOMER APPROVAL	JG
REV.	DATE	DESCRIPTION	BY

INTI POWER INC.  
LM-2500 LIQUID FUEL FORWARDING SKID  
TAG NUMBER: TBD  
PURCHASE ORDER NUMBER: 20090811-002  
IFS JOB NUMBER: 24876  
INTEGRATED FLOW SOLUTIONS, TYLER, TEXAS

ENGINEERED BY: A. PEREZ
APPROVED/DATE:
DESIGNED BY: J. GUERRA
CHECKED/DATE:
PROJECT MANAGER: L. AGUILAR

**PIPING & INSTRUMENTATION DIAGRAM  
LM-2500 LIQUID FUEL FORWARDING SKID**

CLIENT: INTI POWER INC.

SCALE: NONE	SECTION	JOB	SHEET	TOTAL SHEETS	REV.
DATE: 04SEP09	P - 24876 - 01			1	A